



di.

”

**We rescheduled
over \$117,000
in 7 weeks.**

Wendy Carter
Office Manager

di.

DENTALINTELLIGENCE

+

BencoDental[™]

**Tools to help your
team discover & act on
insights quickly.**

Dental Intelligence tracks and analyzes everything, automates your day, finds hidden revenue, fills your schedule, & so much more.

The world's #1 software for tracking, analyzing, managing & growing your practice.

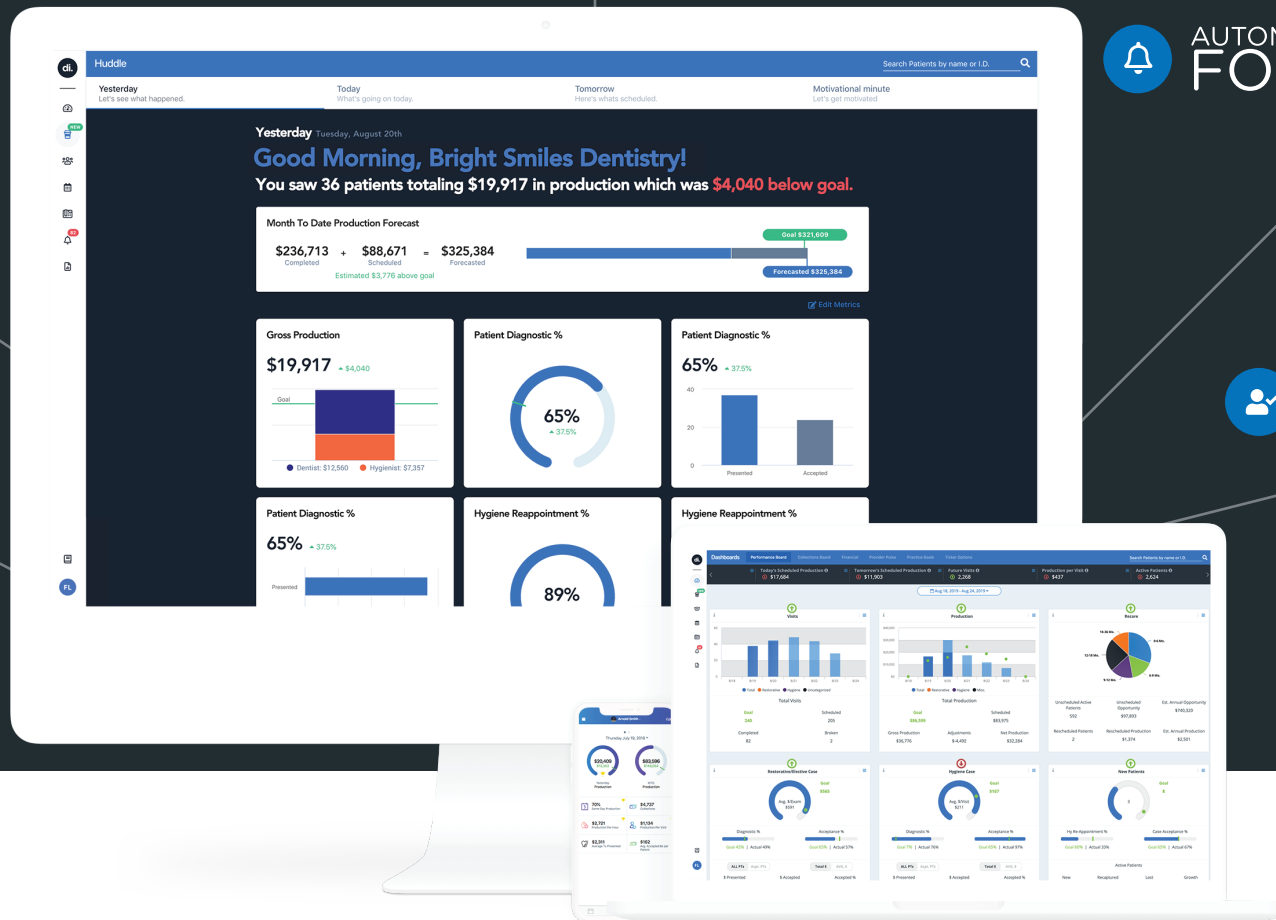
INTELLIGENT
DASHBOARDS

MORNING
HUDDLE

PROVIDER
PULSE

AUTOMATED
FOLLOW-UPS

PATIENT
FINDER



Follow Ups.

What if your practice could actually communicate with you? Telling you when a patient was falling through the cracks, if they had unscheduled treatment, or even a past due account? With Follow Ups, Dental Intelligence does exactly that-- telling you who to call and why-- every single day.

Patient Finder.

Struggling to fill your schedule? Finding the right patient has never been easier. With the Patient Finder you can generate unique lists of patients and find the information that matters most to you. Things like unscheduled treatment, remaining insurance, overdue hygiene & so much more.

Morning Huddle.

The most important 15 minutes of your day made easy. Take the stress out of running your morning meeting by utilizing the Morning Huddle. Our fully automated system helps you reach your goals & celebrate accomplishments, prepare for your patients & even finds the right patients to fill any empty holes in your schedule.

Provider Pulse.

When performance is measured, performance improves. Our system tracks each provider automatically - measuring their performance across dozens of metrics. In the Provider Pulse, progress is measured against goals, trends (good and bad) are noted, and each provider is empowered to grow.

Intelligent Dashboards

Dental Intelligence is always working behind the scenes, gathering data, analyzing, and finding opportunities for you. We remove the guesswork so you know precisely what to work on & when. Complete transparency and eye-opening insights are instantly available using powerful dashboards.

Mobile App.

See all of your practice information in the palm of your hand. Instant access to the information you need anytime you need it. See schedules, access patient information, review practice performance data, collections, and anything else you want to know-- all from your smartphone or tablet.

Ready to learn more?

See how thousands of practices are using Dental Intelligence to save time, find hidden revenue, fill schedules, keep patients coming back, increase production & so much more. Contact your Benco Rep Today to setup a demo!